

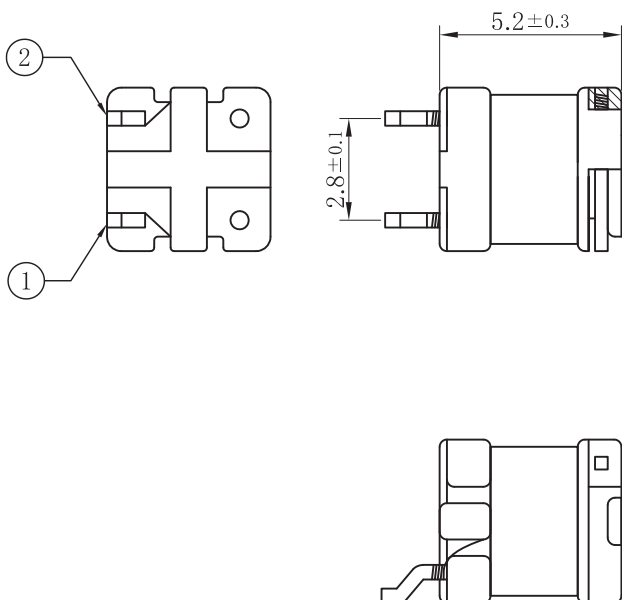
TS-F45 series

Tokyo Coil Trigger Coils for Photoflash Xe Tubes

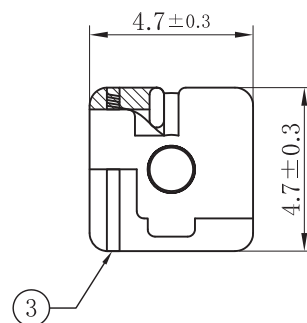
Dimensions

Rohs Compliant : Conformity to RoHS Directive

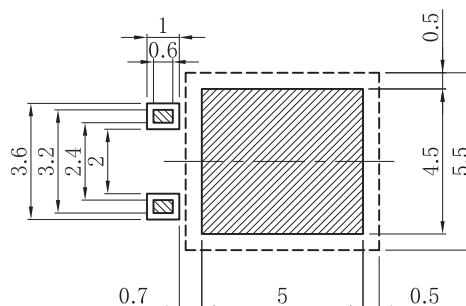
Top View



Bottom View



Pad Layout

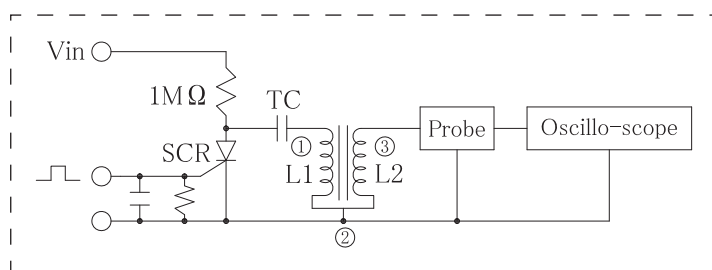


Electrical Specifications

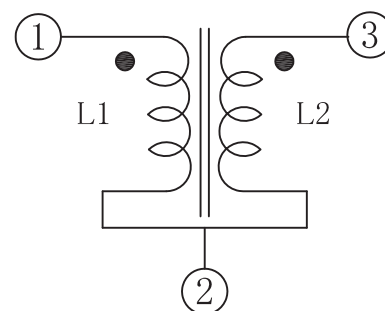
ex) TS-F45A

1 INDUCTANCE	L1	1.3 $\mu\text{H} \pm 15\%$
	L2	3.4 mH $\pm 15\%$ (1KHz / 1V)
2 RESISTANCE	L1	373 m $\Omega \pm 15\%$
	L2	126 $\Omega \pm 15\%$
3 Out put voltage	at 230 V	- 4.8VKV $\pm 10\%$

4 Measuring condition



Schematics



Dot marks mean polarity

- * Oscilloscope - Tektronix TDS540C
- * Voltage distributor - Tektronix P6015A No.3B
- * Output measuring circuit : TCE standard #1 SCR1
- * SCR - CR02AM-8
- * TC - 400MMW333JEF or Equivalents

